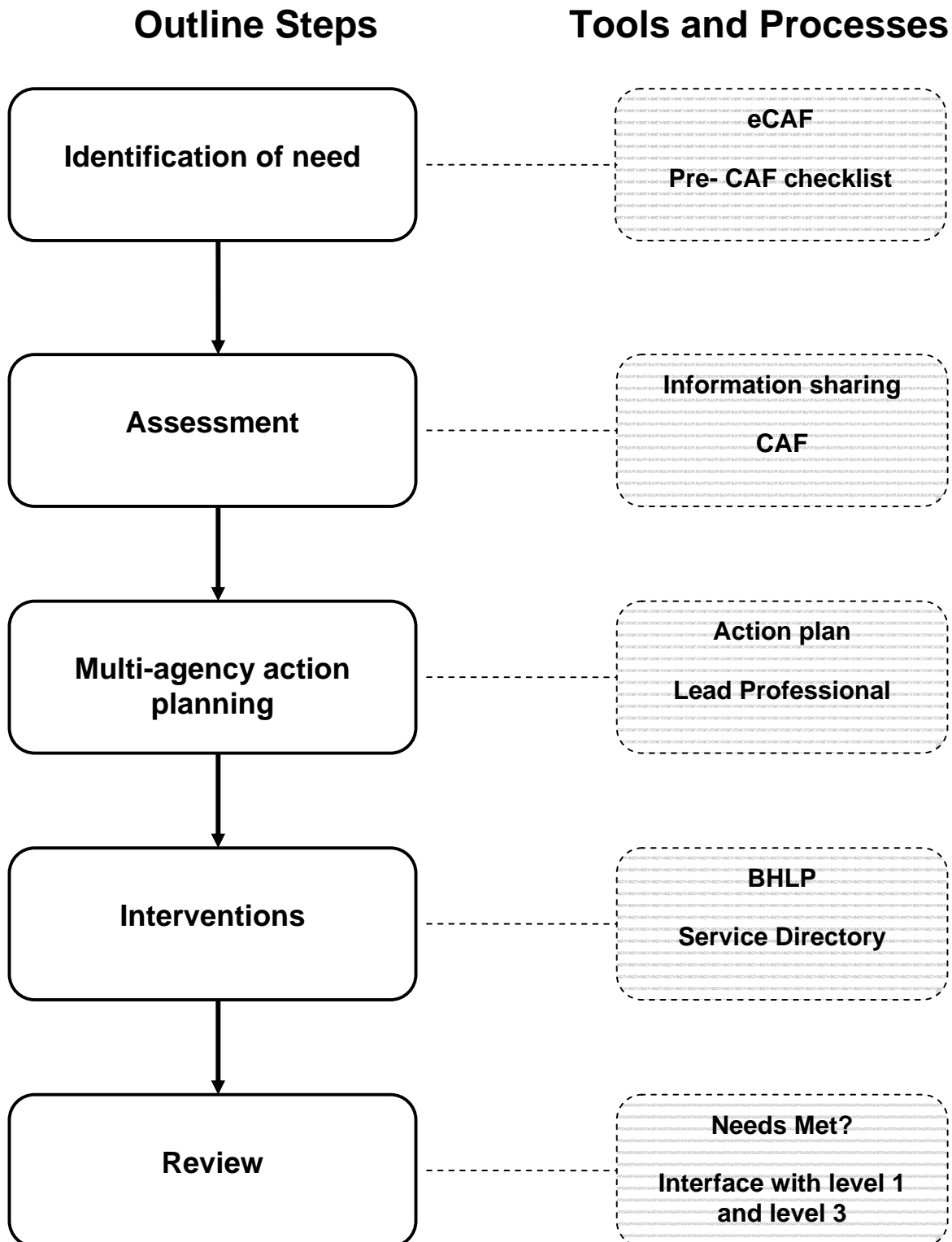


AXS Integrated Working Process



AXS Integrated Working Process Notes

- This flowchart denotes the steps required to ensure that children and young people receive the right support when additional needs have been identified.
- Practitioners will be used to identifying needs and working out ways of meeting those needs to ensure that children and young people reach their potential and achieve the five outcomes, within their normal working practices. Consider the five pink steps on the left hand side.
- When we refer to Integrated Working the important step to focus on within this flowchart is the Multi- Agency Action Planning one. It is recognised that a coordinated multi-agency response will be beneficial to ensure that children and young people have tailor-made and often creative action plans to meet their needs. These should be personalised plans which are needs-led rather than service-led.
- In order to achieve such action plans there are other tools and processes which can be used at the different steps within the process, those in the grey boxes on the right hand side. These tools will be explained in more detail shortly.